

Linear Displacement Sensor



FEATURES

- Infinite resolution
- True output linearity over the entire measurement range
- Low operating forces
- Excellent stability and temperature compensation

DESCRIPTION

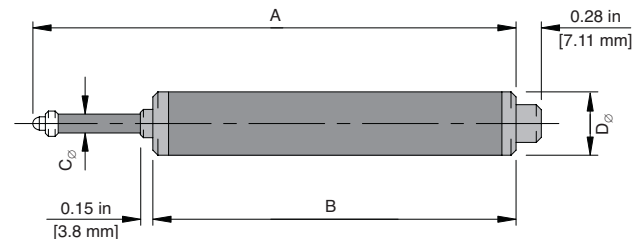
Vishay Micro-Measurements Linear Displacement Sensors use a fully active 350-ohm strain-gage bridge to sense spindle displacement, giving infinite resolution and excellent linearity. They are compatible with all standard strain-gage instrumentation with bridge excitation from 2 to 10 volts. With a selection of models having full-scale ranges from 1/4 in [5 mm] to 4 in [100 mm], Linear Displacement Sensors feature a unique design that produces maximum operating forces of less than 1 lb [4.4 N]. Available with specially designed mounting fixtures, these versatile sensors are ideally suited for us in research, manufacturing and process control applications.

Accuracy

Vishay Micro-Measurements Linear Displacement Sensors produce an output voltage proportional to a captive, guided spindle displacement by means of a 350-ohm strain gage bridge with four active arms. This arrangement provides excellent temperature compensation and linearity.

Compatibility

Vishay Micro-Measurements Linear Displacement Sensors exhibit the same inherent advantages for linearity, versatility and precision as many other strain-gage-based sensors. As such, they are systems-compatible with a wide range of commonly used sensors for pressure, load, acceleration, vibration, etc. and normally utilize the same instrumentation.



SPECIFICATIONS

| MODEL HS | 5 | 10 | 25 | 50 | 100 | |
|--|--|--------------------|-----------------------------|--------------------|--------------------|---------------------|
| *Displacement Range | 0.25 in [6.5 mm] | 0.5 in [11.2 mm] | 1 in [26 mm] | 2 in [51.5 mm] | 4 in [102 mm] | |
| Dimensions | A | 4.10 in [104.2 mm] | 4.30 in [109.2 mm] | 5.44 in [138.2 mm] | 8.48 in [215.4 mm] | 14.97 in [380.2 mm] |
| | B | 3.49 in [88.6 mm] | 3.49 in [88.6 mm] | 4.08 in [103.6 mm] | 6.11 in [155.2 mm] | 10.47 in [266.0 mm] |
| | C\varnothing | 0.19 in [4.8 mm] | 0.19 in [4.8 mm] | 0.19 in [4.8 mm] | 0.19 in [4.8 mm] | 0.24 in [6.0 mm] |
| | D\varnothing | 0.69 in [17.4 mm] | 0.69 in [17.4 mm] | 0.69 in [17.4 mm] | 0.69 in [17.4 mm] | 1.0 in [25.4 mm] |
| Weight | 0.31 lb [140 g] | 0.31 lb [140 g] | 0.33 lb [150 g] | 0.44 lb [200 g] | 1.10 lb [500 g] | |
| Spring Force* | 0.44 lb [200 g] | 0.55 lb [250 g] | 0.55 lb [250 g] | 0.66 lb [300 g] | 0.77 lb [350 g] | |
| Excitation | 2 to 10 V, ac or dc | | | | | |
| Frequency Response* | 5-mm displacement: 100 Hz; 100-mm displacement: 10 Hz | | | | | |
| Rated (F.S.) Output* | 4.5 mV/V | 5.3 mV/V | 7.0 mV/V | 3.6 mV/V | 5.2 mV/V | |
| Nonlinearity (Best-Fit Method)* | 0.35% FS | 0.35% FS | 0.35% FS | 0.35% FS | 0.35% FS | |
| Resolution | Infinite | | | | | |
| Bridge Resistance (Nominal) | 350 ohms Bridge, 100k ohms Zero Balance | | | | | |
| Temperature Range | +15 to +140°F [-10 to +60°C] | | | | | |
| Temperature Coefficient (%FS)* | Zero <0.006%/°F [<0.01%/°C] | | Span <0.006%/°F [<0.01%/°C] | | | |
| Termination | 0.18 in PVC 7/0.008 [4.5 mm PVC 7/0.2], 4-core shielded, 6.6 ft [2.2 m] long | | | | | |
| Electrical Connections | Input: Red+ Black- ; Output: Green+ White- | | | | | |

*Typical figures: Actual values subject to calibration.



Linear Displacement Sensor

FATIGUE LIFE

| Model | Displacement (in) | | | | |
|--------------|-----------------------------|----------|----------|----------|----------|
| | 0.25 | 0.50 | 1.00 | 2.00 | 4.00 |
| | Cycles to Failure (Nominal) | | | | |
| HS5 | 5.00E+04 | | | | |
| HS10 | 5.00E+05 | 5.00E+04 | | | |
| HS25 | 5.00E+06 | 5.00E+05 | 5.00E+04 | | |
| HS50 | 5.00E+06 | 5.00E+06 | 5.00E+06 | 5.00E+05 | |
| HS100 | 5.00E+06 | 5.00E+06 | 5.00E+06 | 5.00E+05 | 5.00E+04 |
| | Signal (mV/V) | | | | |
| HS5 | 4.50 | | | | |
| HS10 | 2.65 | 5.30 | | | |
| HS25 | 1.75 | 3.50 | 7.00 | | |
| HS50 | 0.45 | 0.90 | 1.80 | 3.60 | |
| HS100 | 0.32 | 0.65 | 1.30 | 2.60 | 5.20 |

*Please note that recommended displacements are indicated by shading.



Disclaimer

All product specifications and data are subject to change without notice.

Vishay Intertechnology, Inc., its affiliates, agents, and employees, and all persons acting on its or their behalf (collectively, "Vishay"), disclaim any and all liability for any errors, inaccuracies or incompleteness contained herein or in any other disclosure relating to any product.

Vishay disclaims any and all liability arising out of the use or application of any product described herein or of any information provided herein to the maximum extent permitted by law. The product specifications do not expand or otherwise modify Vishay's terms and conditions of purchase, including but not limited to the warranty expressed therein, which apply to these products.

No license, express or implied, by estoppel or otherwise, to any intellectual property rights is granted by this document or by any conduct of Vishay.

The products shown herein are not designed for use in medical, life-saving, or life-sustaining applications unless otherwise expressly indicated. Customers using or selling Vishay products not expressly indicated for use in such applications do so entirely at their own risk and agree to fully indemnify Vishay for any damages arising or resulting from such use or sale. Please contact authorized Vishay personnel to obtain written terms and conditions regarding products designed for such applications.

Product names and markings noted herein may be trademarks of their respective owners.